

## Local Installation of Maple 15:

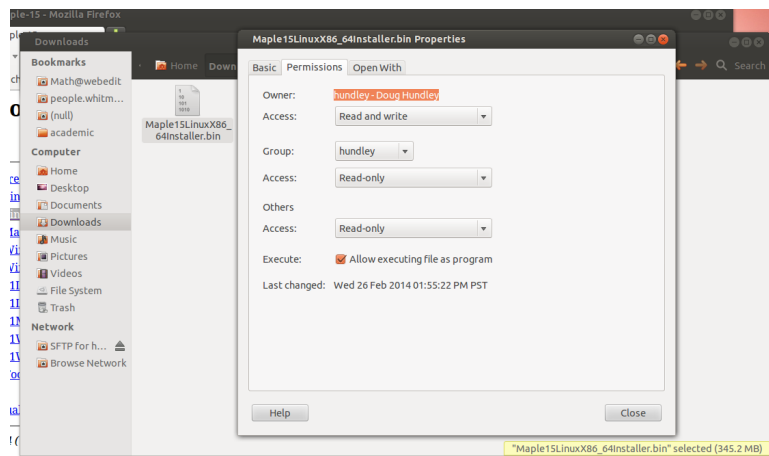
- Go to

`http://math.whitman.edu/Maple-15/`

- Choose:

`Maple15LinuxX86_64Installer.bin`

- Use your File Browser to go to your Downloads folder, and right-click this file. Go to the "Permissions" tab, and select "Allow executing file as program"



- Go to the Terminal window.

Type: `cd Downloads`

Type: `./Maple` (use the tab key to auto-complete)

- When installing, remember to use the NETWORK INSTALL, and type: `math.whitman.edu`
- To set Maple options, go to Tools, then Options. Change the top entry of "Display" to "Maple Notation", and the default worksheet in "Interface" to "Worksheet".